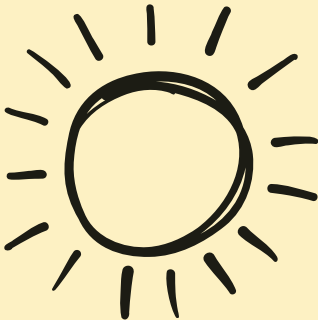


# **CLIMATE CHANGE**



**SOCIAL ISSUE**

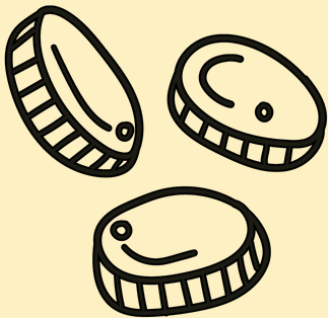
# CLIMATE CHANGE

Our planet is heating up, bringing more extreme weather, rising sea levels, and disruptions to nature. This means losing precious wildlife, struggling farms, and communities forced to move. It also affects our health, food supply, and economies—hitting the most vulnerable the hardest and making inequality worse.

## GOAL:

To lessen the impacts of climate change, to cut greenhouse gas emissions, and promote sustainable practices. By helping communities adapt to environmental challenges, we can create a more resilient and greener future for everyone

# POVERTY



**SOCIAL ISSUE**

# **POVERTY**

Poverty is a significant challenge for millions of people around the world. It creates barriers that prevent individuals and families from accessing basic needs like food, housing, healthcare, and education. When these needs aren't met, it can lead to poor health, limited opportunities, and a lack of economic mobility, making it harder to escape the cycle of poverty. This deepens social inequalities and reduces the chances for a better future

## **GOAL:**

Reduce poverty by improving access to resources and opportunities, fostering social inclusion, and helping individuals and families break free from poverty and build better, more sustainable futures.

# **ACCESS TO EDUCATION**



**SOCIAL ISSUE**

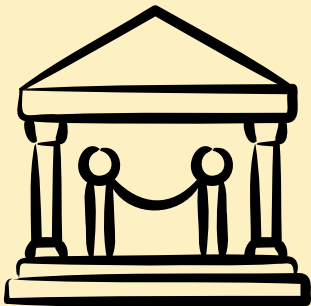
# **ACCESS TO FORMAL AND NON-FORMAL EDUCATION**

Many children and adults around the world struggle to access quality education because of challenges like poverty, gender inequality, where they live, disabilities, or political instability. This leads to a lack of skills, opportunities, and knowledge, making it harder for them to break free from cycles of poverty, unemployment, and social inequality.

## **GOAL:**

To make sure everyone has equal access to quality education, no matter their background, gender, or where they live. This means offering the right resources, infrastructure, and support to marginalized communities, helping them improve literacy rates, develop essential skills, and create opportunities for social mobility

# **CULTURAL HERITAGE PROTECTION**



**SOCIAL ISSUE**

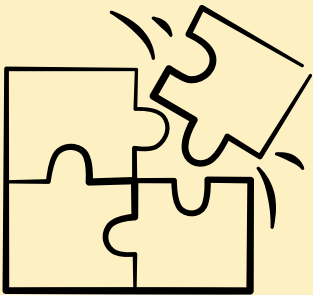
# **CULTURAL HERITAGE PROTECTION**

Globalization, modernization, and urbanization are causing the erosion of cultural heritage, including traditional practices, languages, arts, and crafts. This loss of cultural identity, particularly among indigenous and minority communities, has profound social, economic, and psychological consequences.

## **GOAL:**

To preserve and celebrate cultural heritage by developing sustainable business models that support traditional crafts, languages, and practices, while offering economic opportunities and social recognition to communities that preserve these traditions..

# **DISCRIMINATION AND SOCIAL EXCLUSION**



**SOCIAL ISSUE**

# **DISCRIMINATION AND SOCIAL EXCLUSION**

Discrimination and social exclusion impact marginalized groups based on factors such as race, ethnicity, gender, disability, sexual orientation, religion, and socioeconomic status. These individuals often encounter systemic obstacles that limit their access to key resources, including employment, education, healthcare, and social services. As a result, they face heightened risks of poverty, inequality, mental health challenges, and a lack of opportunities for personal and collective advancement. Discrimination reinforces bias, restricts access to essential resources, and exacerbates social divisions, hindering both individual and societal progress.

## **GOAL:**

To reduce discrimination and promote social inclusion by creating equitable opportunities for marginalized groups. This involves breaking down barriers to social, economic, and political participation, ensuring that these groups have access to the same opportunities as others. The aim is to foster a culture of equality, diversity, and belonging, where everyone, regardless of their background, can thrive and contribute to society.

# **UNEMPLOYMENT & WORK INTEGRATION**



**SOCIAL ISSUE**

# **UNEMPLOYMENT & WORK INTEGRATION**

High unemployment is a pressing social issue, especially for vulnerable groups like people with disabilities, NEETs (not in education, employment, or training), and individuals dealing with addiction, etc. These groups face significant barriers to accessing education, skills development, and stable job opportunities, which often leads to long-term economic hardship and social exclusion. The lack of employment opportunities contributes to the deepening of inequalities, preventing them from fully participating in society and achieving financial independence.

## **GOAL:**

Increase employment opportunities and support the work integration of marginalized groups, including individuals with disabilities, long-term unemployed, those in need of resocialization, and minority communities, to foster greater economic inclusion and reduce inequality.